

MU 系列

SERIES

125°C 标准品
125°C Standard
◆ 特 长 / FEATURES

- 贴片型产品。Surface-mounted device.
- 可以进行无铅回流焊接。Lead free reflow soldering is available.
- 可以使用波峰焊。Flow soldering is available.
- RoHS指令对应品。RoHS compliance.

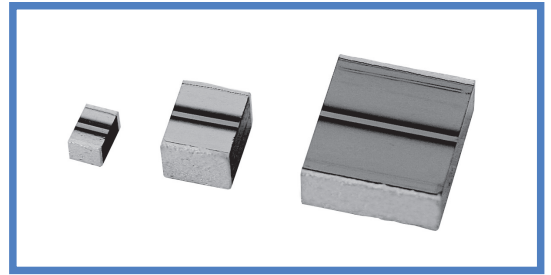
◆ 注 意 / CAUTION

MU系列为回流焊，波峰焊兼用品。请不要使用VPS法等实装。

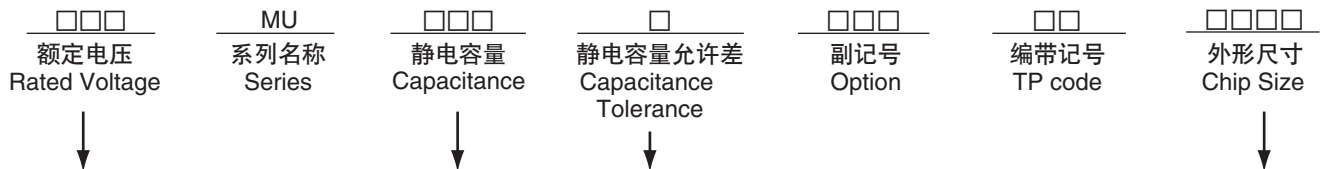
MU series shall be used in reflow and flow soldering method. Do not use in VPS soldering method.

防潮袋开封后，请与干燥后的硅胶一起放在防潮袋中保管。详情请咨询我们。

Please storage in moisture proof bag with dry silica-gel after opening the moisture proof bag. Please ask for detail.


◆ 规格表 / SPECIFICATIONS

项 目	Items	特 性		Characteristics
工作温度范围	Category Temperature Range	- 55 ~ + 125°C		
额定电压范围	Rated Voltage Range	16~63Vdc	100Vdc	
静电容量范围	Capacitance Range	0.0001~22μF (101~226) E6系列 0.0001~22μF(101~226) E6 series	0.001~0.1μF (102~104) E6系列 0.001~0.1μF(102~104) E6 series	
静电容量允许差	Capacitance Tolerance	± 10% (K), ± 20% (M)		
损失角正切值(tan δ)	Dissipation Factor	1.5%以下 (1kHz±20%, 5Vrms以下) 1.5% or less(1kHz±20%, 5Vrms or less)		
耐 久 性	Voltage Proof	施加150%的额定电压一分钟或175%的额定电压1~5秒钟后，无异常情况。 Nothing abnormal shall be found, when applying 150% of the rated voltage for 1 minute or 175% of the rated voltage for 1 second to 5 seconds.		
绝 缘 电 阻	Insulation Resistance	C≤0.1μF:3000MΩ以上 (施加额定电压1分钟后) C≤0.1μF:3000MΩ or more (After 1 minute application of rated voltage) C>0.1μF:300MΩ·μF以上 (施加额定电压1分钟后) C>0.1μF:300MΩ·μF or more (After 1 minute application of rated voltage)		1000MΩ以上 (施加额定电压1分钟后) 1000MΩ or more (After 1 minute application of rated voltage)

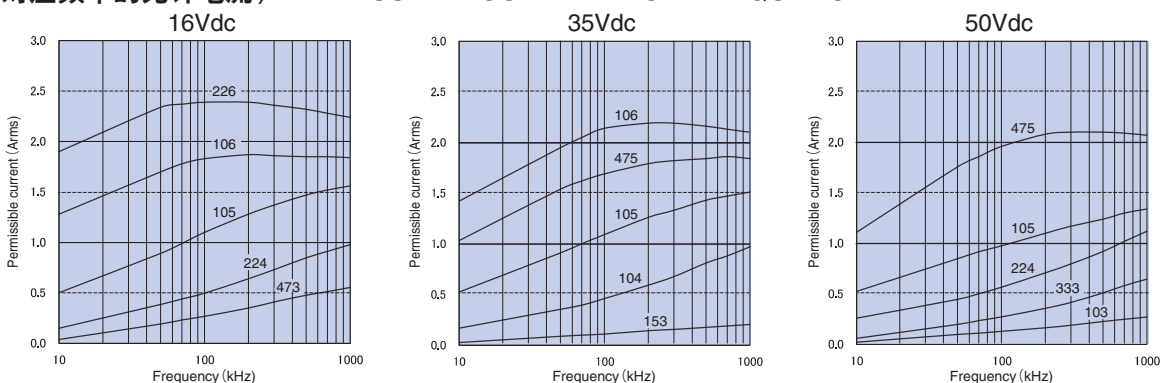
◆ 产品型号体系 / PART NUMBER


记号	额定电压
Code	Rated Voltage
16	16Vdc
25	25Vdc
35	35Vdc
50	50Vdc
63	63Vdc
100	100Vdc

记号	静电容量
Code	Capacitance
101	0.0001μF
682	0.0068μF
153	0.015μF
224	0.22μF
335	3.3μF
226	22μF

记号	允许差
Code	Tolerance
K	± 10%
M	± 20%

记号	外形尺寸
Code	Chip Size
1608	1.6×0.8mm
2012	2.0×1.25mm
3216	3.2×1.6mm
3225	3.2×2.5mm
4532	4.5×3.2mm
5750	5.7×5.0mm

◆ 对应频率的允许电流 / PERMISSIBLE CURRENT FOR FREQUENCY


◆标准品一览表 / STANDARD SIZE

□: 静电容量允许差记号 / Tolerance

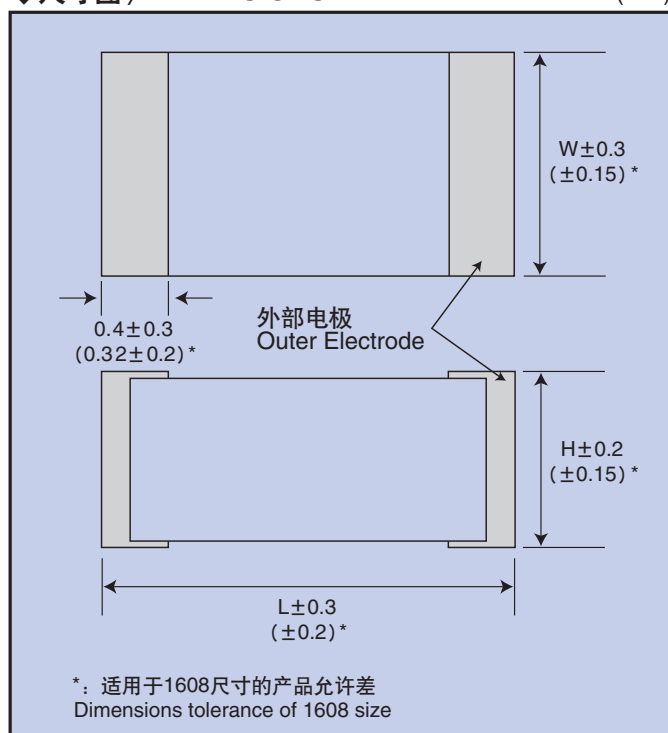
额定电压 Rated Voltage (Vdc)	静电容量 Capacitance (μF)	外形尺寸 Size			编号 Part No.
		L (mm)	W (mm)	H (mm)	
16	0.047	1.6	0.8	0.65	16MU473□Y11608
	0.15	2.0	1.25	1.0	16MU154□Z22012
	0.22	2.0	1.25	1.0	16MU224□Z22012
	1.0	3.2	1.6	1.4	16MU105□A23216
	1.5	3.2	1.6	1.4	16MU155□A23216
	2.2	3.2	2.5	1.8	16MU225□B23225
	3.3	3.2	2.5	2.0	16MU335□B33225
	4.7	4.5	3.2	1.4	16MU475□C14532
	6.8	4.5	3.2	1.8	16MU685□C24532
	10	4.5	3.2	2.6	16MU106□C44532
	15	5.7	5.0	1.8	16MU156□D15750
	22	5.7	5.0	2.6	16MU226□D35750
25	0.033	1.6	0.8	0.65	25MU333□Y11608
	0.10	2.0	1.25	1.0	25MU104□Z22012
	0.15	2.0	1.25	1.0	25MU154□Z22012
	0.68	3.2	1.6	1.4	25MU684□A23216
	1.0	3.2	1.6	1.4	25MU105□A23216
	1.5	3.2	2.5	2.0	25MU155□B33225
	2.2	3.2	2.5	1.8	25MU225□B23225
	3.3	4.5	3.2	1.4	25MU335□C14532
	4.7	4.5	3.2	1.8	25MU475□C24532
	6.8	4.5	3.2	2.6	25MU685□C44532
	10	5.7	5.0	1.8	25MU106□D15750
	15	5.7	5.0	2.6	25MU156□D35750
35	0.015	1.6	0.8	0.65	35MU153□Y11608
	0.022	1.6	0.8	0.65	35MU223□Y11608
	0.047	2.0	1.25	1.0	35MU473□Z22012
	0.068	2.0	1.25	0.8	35MU683□Z12012
	0.10	2.0	1.25	1.0	35MU104□Z22012
	0.47	3.2	1.6	1.0	35MU474□A13216
	0.68	3.2	1.6	1.4	35MU684□A23216
	1.0	3.2	2.5	1.4	35MU105□B13225
	1.5	3.2	2.5	2.0	35MU155□B33225
	2.2	4.5	3.2	1.4	35MU225□C14532
	3.3	4.5	3.2	1.8	35MU335□C24532
	4.7	4.5	3.2	2.6	35MU475□C44532
6.8	5.7	5.0	1.8	35MU685□D15750	
10	5.7	5.0	2.6	35MU106□D35750	
50	0.00010	1.6	0.8	0.65	50MU101□Y11608
	0.00015	1.6	0.8	0.65	50MU151□Y11608
	0.00022	1.6	0.8	0.65	50MU221□Y11608
	0.00033	1.6	0.8	0.65	50MU331□Y11608
	0.00047	1.6	0.8	0.65	50MU471□Y11608
	0.00068	1.6	0.8	0.65	50MU681□Y11608
	0.0010	1.6	0.8	0.65	50MU102□Y11608
	0.0015	1.6	0.8	0.65	50MU152□Y11608
	0.0022	1.6	0.8	0.65	50MU222□Y11608
	0.0033	1.6	0.8	0.65	50MU332□Y11608
	0.0047	1.6	0.8	0.65	50MU472□Y11608
	0.0068	1.6	0.8	0.65	50MU682□Y11608
0.010	1.6	0.8	0.65	50MU103□Y11608	
0.033	2.0	1.25	1.0	50MU333□Z22012	
0.047	2.0	1.25	1.0	50MU473□Z22012	
0.10	3.2	1.6	1.0	50MU104□A13216	
0.15	3.2	1.6	1.0	50MU154□A13216	
0.22	3.2	1.6	1.0	50MU224□A13216	
0.33	3.2	1.6	1.4	50MU334□A23216	
0.47	3.2	2.5	1.4	50MU474□B13225	
0.68	3.2	2.5	1.8	50MU684□B23225	
1.0	4.5	3.2	1.4	50MU105□C14532	
1.5	4.5	3.2	1.8	50MU155□C24532	
2.2	4.5	3.2	2.6	50MU225□C44532	
3.3	5.7	5.0	1.8	50MU335□D15750	
4.7	5.7	5.0	2.6	50MU475□D35750	

额定电压 Rated Voltage (Vdc)	静电容量 Capacitance (μF)	外形尺寸 Size			编号 Part No.
		L (mm)	W (mm)	H (mm)	
63	0.00010	2.0	1.25	0.8	63MU101□Z12012
	0.00015	2.0	1.25	0.8	63MU151□Z12012
	0.00022	2.0	1.25	0.8	63MU221□Z12012
	0.00033	2.0	1.25	0.8	63MU331□Z12012
	0.00047	2.0	1.25	0.8	63MU471□Z12012
	0.00068	2.0	1.25	0.8	63MU681□Z12012
	0.0010	2.0	1.25	0.8	63MU102□Z12012
	0.0015	2.0	1.25	0.8	63MU152□Z12012
	0.0022	2.0	1.25	0.8	63MU222□Z12012
	0.0033	2.0	1.25	0.8	63MU332□Z12012
	0.0047	2.0	1.25	0.8	63MU472□Z12012
	0.0068	2.0	1.25	0.8	63MU682□Z12012
	0.010	2.0	1.25	0.8	63MU103□Z12012
	0.015	2.0	1.25	0.8	63MU153□Z12012
	0.022	2.0	1.25	0.8	63MU223□Z12012
	0.033	2.0	1.25	1.0	63MU333□Z22012
	0.047	3.2	1.6	1.0	63MU473□A13216
	0.068	3.2	1.6	1.0	63MU683□A13216
	0.10	3.2	1.6	1.0	63MU104□A13216
	0.15	3.2	1.6	1.0	63MU154□A13216
	0.22	3.2	1.6	1.4	63MU224□A23216
	0.33	3.2	2.5	1.4	63MU334□B13225
	0.47	3.2	2.5	1.8	63MU474□B23225
	0.68	4.5	3.2	1.4	63MU684□C14532
1.0	4.5	3.2	1.8	63MU105□C24532	
1.5	4.5	3.2	2.6	63MU155□C44532	
2.2	5.7	5.0	1.8	63MU225□D15750	
3.3	5.7	5.0	2.6	63MU335□D35750	
100	0.0010	3.2	1.6	1.0	100MU102□A13216
	0.0015	3.2	1.6	1.0	100MU152□A13216
	0.0022	3.2	1.6	1.0	100MU222□A13216
	0.0033	3.2	1.6	1.0	100MU332□A13216
	0.0047	3.2	1.6	1.0	100MU472□A13216
	0.0068	3.2	1.6	1.0	100MU682□A13216
	0.010	3.2	1.6	1.0	100MU103□A13216
	0.015	3.2	1.6	1.0	100MU153□A13216
	0.022	3.2	1.6	1.0	100MU223□A13216
	0.033	3.2	1.6	1.0	100MU333□A13216
	0.047	3.2	1.6	1.4	100MU473□A23216
	0.068	3.2	2.5	1.4	100MU683□B13225
0.10	3.2	2.5	1.8	100MU104□B23225	

尺寸对比表面 / Size Code Conversion

mm	inch
1608	0603
2012	0805
3216	1206
3225	1210
4532	1812
5750	2220

◆尺寸图 / DIMENSIONS (mm)



作为模拟数据在我司网站提供了PMLCAP® SPICE模型(netlist)。在各种电路设计时会有用。

Our website offers the SPICE model (netlist) of PMLCAP® as the data for simulations. Please make use of various circuit design.